



VSF1-MB POWER & DATA TRACK INSTALLATION GUIDE

Content

INTRODUCTION

| | |
|-----------------------------|---|
| Package Contents | 1 |
| Tools Required | 1 |
| Product Overview | 1 |
| Securing the Screw Capping | 2 |
| VSF1-MB Angle Configuration | 2 |

USING THE PRODUCT

| | |
|--|---|
| Please Read Before Use | 3 |
| Installation - 60° Desk Mount (Free Stand) | 4 |
| Preparation of Data Outlets | 5 |

ALTERNATIVE CONFIGURATIONS

| | |
|--|----|
| Installation - 90° Wall Mount | 6 |
| Shifting of Data Outlets | 9 |
| Preparation of Data Outlets - Feed-Through Data Jack | 10 |

Technical Specifications and Warranty Statement

Package Contents

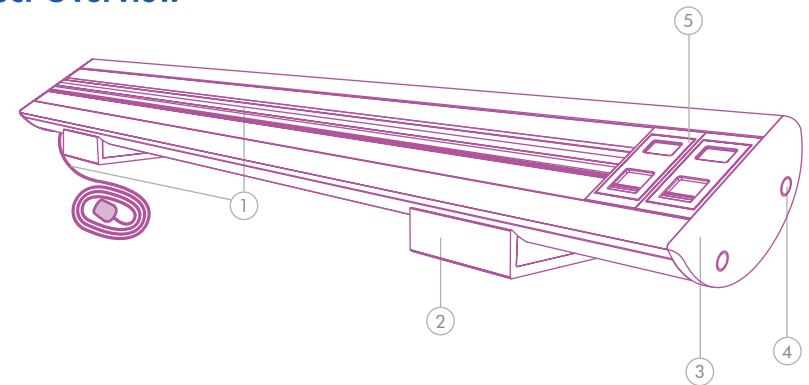
- ① 1 x VSF1-MB Track (Complete with 1.5mm² 3-core flexible cord with plug)
- ② 1 x M2 Allen Key (Ø: 2mm or 5/64in)
- ③ 4 x M5 Wall Plugs with Screws
- ④ 4 x M5 Pan Head Philips Screws
- ⑤ 6 x Screw Cappings
- ⑥ 8 x Anti-Skid Pads
- ⑦ 1 x Installation Guide

* Actual contents may differ slightly depending on configuration.

Tools Required

- ① M2 Allen Key (Included)
Ø: 2mm or 5/64in
- ② Power Drill (Not Included)
Concrete Drill Bit Ø: 4.5mm or 5/32in
- ③ Precision Screwdriver (Not Included)
- ④ Philips Screwdriver (Not Included)

Product Overview



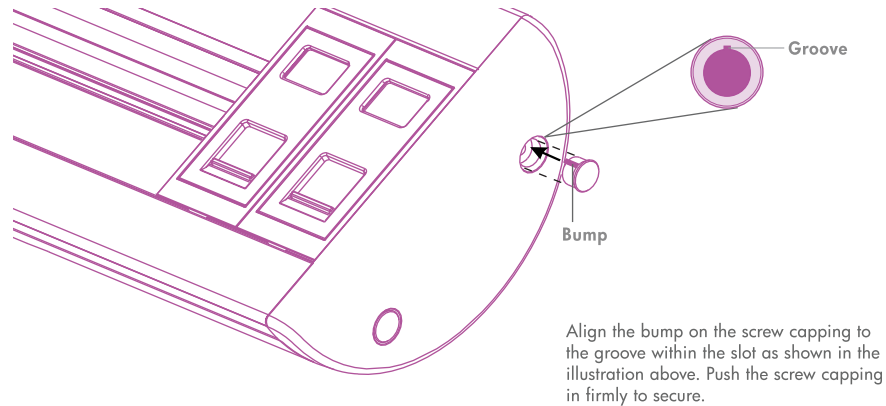
- ① Power Track fitted with 1.5mm² 3-core flexible cord with plug
- ② Mounting Base (consisting of Wall Bracket and VSF Bracket)
- ③ End Cap
- ④ Screw Capping
- ⑤ DS3 Data Socket Housing

All VSF1-MB Tracks have 6 cable entry openings complete with cable entry trims, covers and blanks for ease of power and data configuration.



Securing the Screw Capping

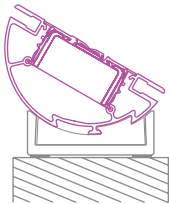
All VSF1-MB Tracks are pre-assembled without securing the screw capping for ease of angle configuration and data outlet preparation.



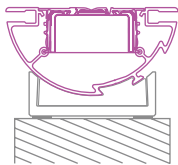
VSF1-MB Angle Configuration

All VSF1-MB Tracks are pre-assembled at 60°. For alternative configuration, refer to “Installation – 90° Wall Mount” of the **ALTERNATIVE CONFIGURATIONS** section.

Desk Mount or Free Standing (Without Screws)

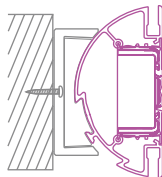


- Pre-assembled in factory at 60° angle



- Changeable by user to configure horizontally at 90° angle

Wall Mount



- Changeable by user to configure vertically at 90° angle

Technical Specifications

Power Track

| | | |
|---------------------------------------|---|---|
| Rated Voltage | : | 125V a.c. Single-phase 250V a.c. Single-phase |
| Rated Current (Pre-wired cable) | : | Total load shall not exceed individual country plug type 10Amp, 13Amp, 16amp - 1.5mm ² 3-core flexible cord 15Amp - 14AWG 3-core flexible cord 20Amp - 12AWG 3-core flexible cord |
| Frequency | : | 50Hz/60Hz |
| Connection of Adaptor or Tap-off Unit | : | Intended to be connected and disconnected when system is energised and with a load connected |
| Ambient Operating Temperature | : | -5°C to +40°C (Not to exceed an average of more than 35°C in any 24 hours period) |
| Degree of Protection | : | IP4X |
| Degree of Pollution | : | 2 (Non-conductive pollution with temporary conductivity caused by condensation) |

Material

| | | |
|-------------------|---|---------------|
| Track and Housing | : | Aluminium |
| Insulation | : | Polycarbonate |

Size and Weight (Based on 1 metre length)

| | | |
|--|---|--------------------------|
| Overall Dimension (Height x Depth x Width) | : | 95.3mm x 89.6mm x 1000mm |
| Weight | : | Estimated 3.5 kilograms |

Data

| | | |
|---------------------------|---|---|
| Recommended Keystone Type | : | Cat5e/Cat6 Side Entry Termination Jacks |
|---------------------------|---|---|

* Product specifications are subject to change without prior notice.

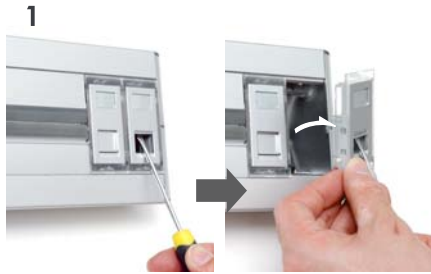
* Pictures shown in this guide are for illustrative purposes only. Actual product outlook may differ.

3 Years Limited Warranty

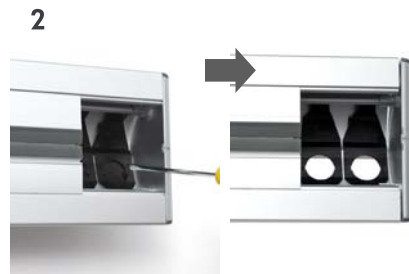
1. Eubiq Pte Ltd (“Eubiq”) warrants to the end-user of the product (“the Customer”) that the product will be free from defects in materials and workmanship under normal use for a period of three (3) years from the date of retail purchase by the original end-user purchaser (“Warranty Period”).
2. The Customer should access and refer to Eubiq’s website at www.eubiq.com for a list of Eubiq authorised dealers to contact for warranty service.
3. All requests for warranty service must be made within the Warranty Period, and be accompanied by the original dated proof of purchase.

Preparation of Data Outlets - Feed-Through Data Jack

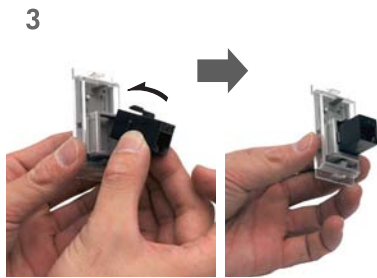
Follow the steps below to install the data outlets with feed-through data jacks.



Using a screwdriver, detach data socket housings from the main housing.



Using a screwdriver, push outwards to remove the cable entry blanks. Attach and secure the end caps and screw cappings.



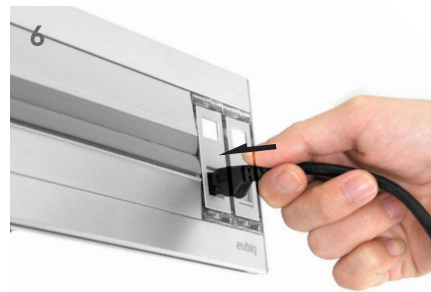
Snap the feed-through jacks onto the data socket housings.



Snap the data socket housings onto the main housing.

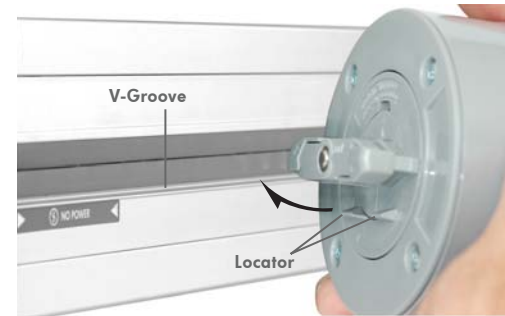


To connect your VSF1 to a network, insert incoming phone/data cable firmly into the rear of the feed-through data jack until it clicks. The opposite end of the cable should be connected to the network hub/switch/router.



To begin using the data outlets on your VSF1, insert one end of the phone/data cable firmly until it clicks. The opposite end of the cable should be connected to your telephone/modem device.

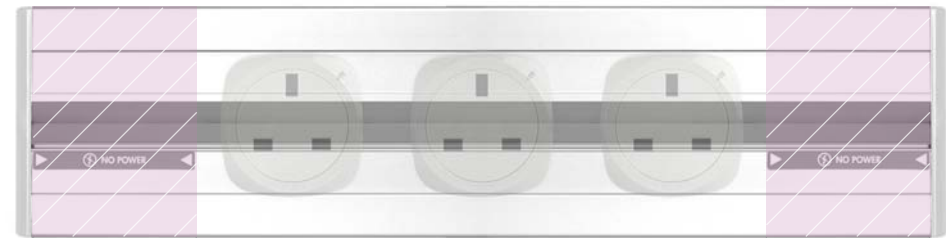
PLEASE READ BEFORE USE



CAUTION

- Keep away from fire
- Keep away from water
- Not for outdoor use
- To be installed by a qualified electrician/installer

- 1) Ensure V-Groove is at the bottom when installing or mounting
- 2) Always align Locator to V-Groove before inserting adaptors/accessories



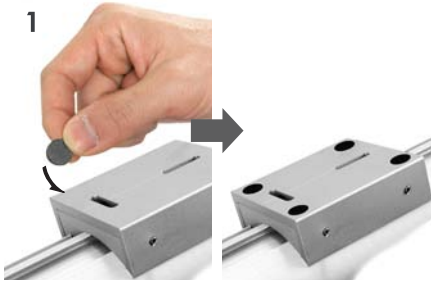
Adaptors/
accessories are
not to be engaged
within this region.

Adaptors/
accessories are
not to be engaged
within this region.

Installation - 60° Desk Mount (Free Stand)

Follow the steps below to start using VSF1-MB as a free stand, desk mount track.

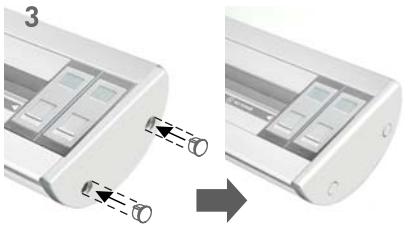
* To change to 90° Desk Mount configuration, follow steps 1 to 8 of "Installation - 90° Wall Mount" of the **ALTERNATIVE CONFIGURATIONS** section before proceeding.



Turn the VSF1-MB Track over so the bottom of the mounting base faces up. Attach the anti-skid pads to each corner of the mounting base as shown. Repeat this step for the 2nd mounting base.



For installation of data outlets, refer to "Preparation of Data Outlets".



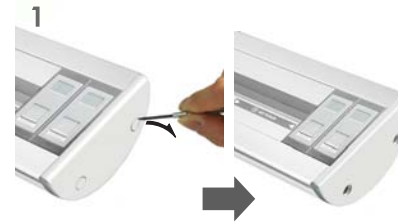
Snap in the screw cappings on both end caps (refer to "Securing the Screw Capping").



Place the VSF1-MB Track on the desk. To power up, connect plug to the nearest power outlet and switch it on.

Shifting of Data Outlets

Follow the steps below to shift data outlets to the opposite end of the housing.



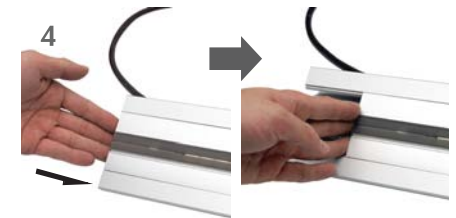
Using a precision screwdriver (not included), remove screw cappings on both sides if necessary.



Using a Philips screwdriver (not included), untighten the screws on both end caps and remove end caps.



Detach data socket housing from the main housing.



Push and flush the power track to the opposite end of the housing.

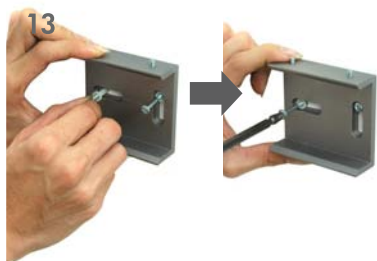


Using a screwdriver, push outwards to remove the cable entry blanks. Attach and secure the end caps and screw cappings.

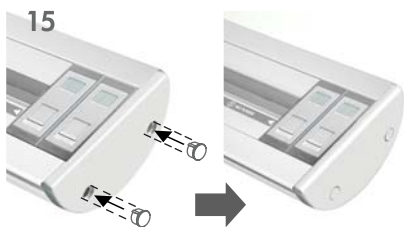


To complete the installation of the data outlets, refer to step 2 to 6 of "Preparation of Data Outlets".

Installation - 90° Wall Mount (Cont'd)



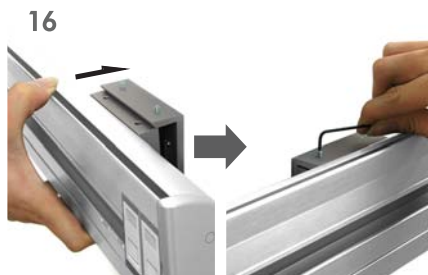
Align wall bracket to its marked location. Ensure that the set screws are pointing upwards. Insert wall plugs and tighten the screws to secure wall bracket. Repeat this step for the 2nd wall bracket.



Snap in the screw cappings (refer to "Securing the Screw Capping").



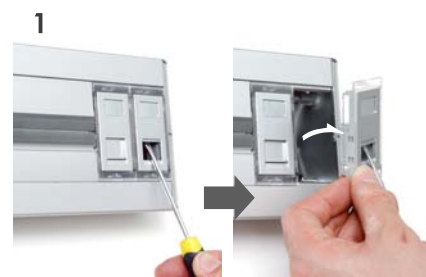
To begin installation of data outlets at this point, refer to "Preparation of Data Outlets".



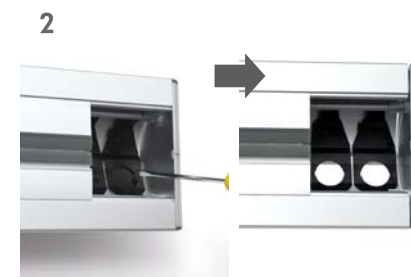
Align the VSF brackets to the wall brackets and slot in VSF1-MB Track. Using the M2 allen key provided (Ø: 2mm or 5/64in), tighten the set screws to secure VSF1-MB Track. To power up, connect plug to the nearest power outlet and switch it on.

Preparation of Data Outlets

Follow the steps below to install the data outlets.



Using a screwdriver, detach data socket housings from the main housing.



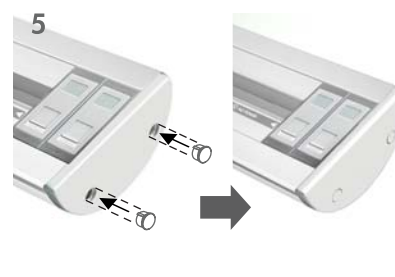
Using a screwdriver, push outwards to remove the cable entry blanks.



Insert network cable through the opening on the rear of the main housing. Terminate cable to keystone jack (refer to "Technical Specifications" for recommended jacks) and attach jack to data socket housing. **If in doubt, consult a qualified electrician/installer.**



Snap data socket housings onto the main housing. Repeat step 2 to 4 if necessary.



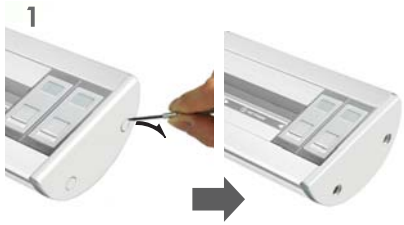
Snap in the screw cappings (refer to "Securing the Screw Capping").



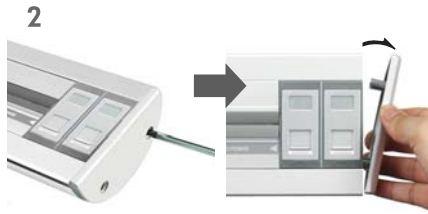
To begin using the data outlets, insert one end of the phone/data cable firmly until it clicks. The opposite end of the cable should be connected to your telephone/modem device.

Installation - 90° Wall Mount

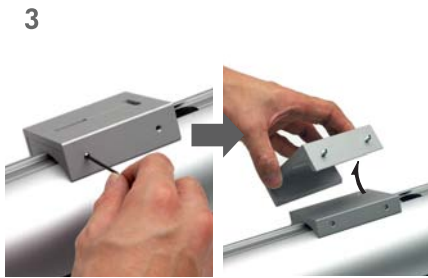
Follow the steps below to install VSF1-MB as a wall mount track.



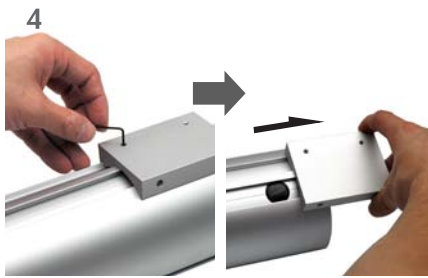
Using a precision screwdriver (not included), remove screw cappings from the end cap on the right side of the VSF1-MB Track if necessary.



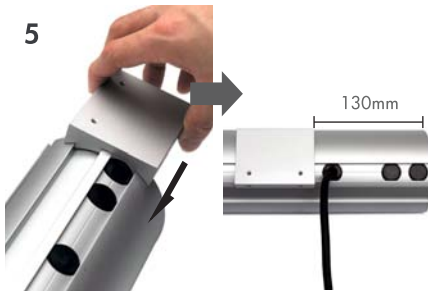
Using a Philips screwdriver (not included), untighten the screws and remove the end cap.



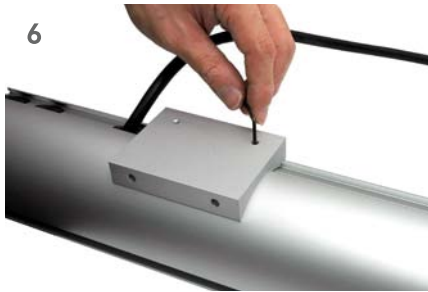
Untighten the set screws on the mounting base with the M2 allen key provided (Ø: 2mm or 5/64in). Detach the wall bracket from the mounting base. **Repeat this step for the 2nd wall bracket.**



Untighten the set screws on the VSF bracket with the M2 allen key provided (Ø: 2mm or 5/64in). Slide and remove the VSF bracket from the track housing. **Repeat this step for the 2nd VSF bracket.**

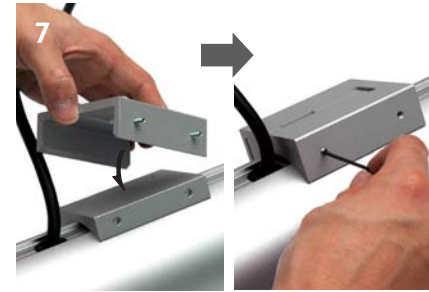


Align and slide the VSF bracket to the groove on the housing for 90° configuration. Position it 130mm away from the edge of the housing. **Repeat this step for the 2nd VSF bracket on opposite side.**



Using the M2 allen key provided (Ø: 2mm or 5/64in), tighten the set screws to secure VSF bracket to the housing. **Repeat this step for the 2nd VSF bracket.**

Installation - 90° Wall Mount (Cont'd)



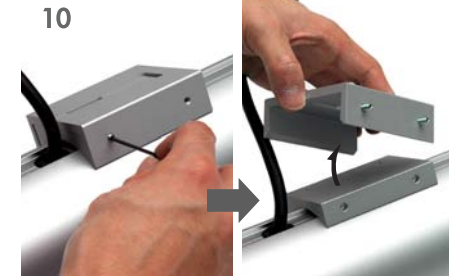
Attach the wall brackets to the VSF brackets. Using the M2 allen key provided (Ø: 2mm or 5/64in), tighten the set screws to secure mounting base. **Repeat this step for the 2nd wall bracket.**



Attach the end cap. Using a Philips screwdriver, tighten the screws on the end cap.



Determine the location of VSF1-MB Track. With the aid of a spirit level tool (not included), align and mark the desired location of the mounting base on the wall.



Untighten the set screws on the mounting base with the M2 allen key provided (Ø: 2mm or 5/64in). Detach the wall bracket from the mounting base.



Align the wall bracket to the marked locations in Step 9 and mark the recommended locations of drilled holes. **Repeat step 10 and 11 for the 2nd wall bracket.**



Drill the holes at marked area for inserting of wall plugs (concrete drill bit Ø 4.5mm).